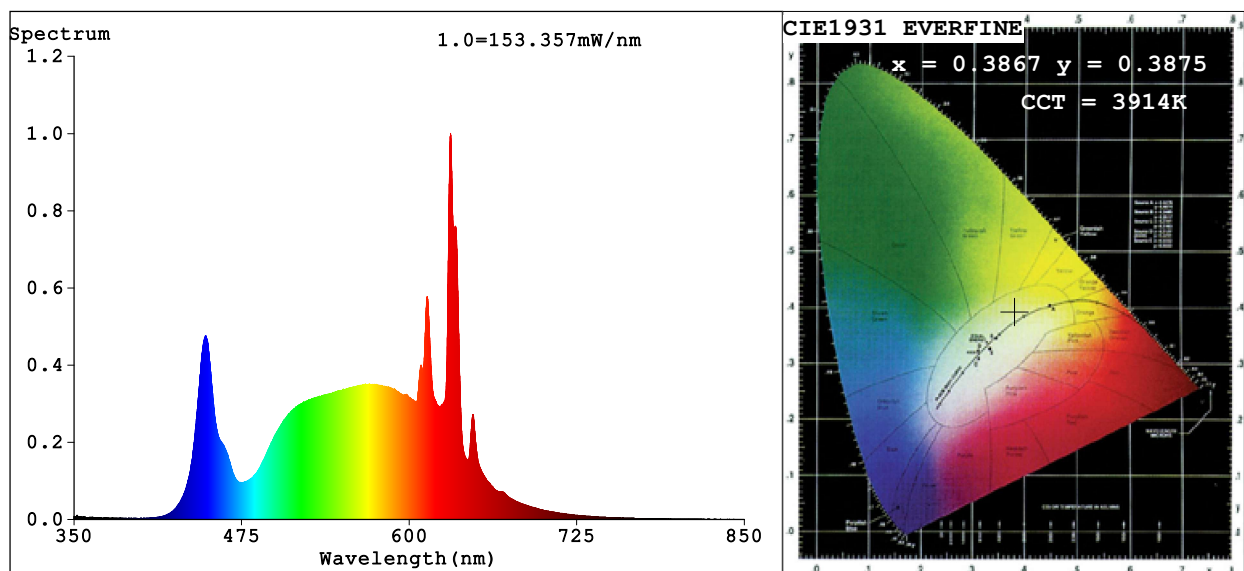


Spectrum Test Report



Color Parameters:

Chromaticity Coordinate: $x=0.3867$ $y=0.3875$ $u'=0.2250$ $v'=0.5071$

CCT=3914K (Duv=0.0031) Dominant WL:Ld =577.9nm Purity=32.3%

Ratio:R=20.0% G=76.6% B=3.4%; Peak WL:Lp=630.9nm FWHM=8.3nm

Render Index:Ra=91.2 CRI=87.1 TM30:Rf=90 Rg=101

R1 =92 R2 =92 R3 =90 R4 =93 R5 =91 R6 =89 R7 =94

R8 =88 R9 =65 R10=79 R11=93 R12=69 R13=91 R14=94 R15=90

Photo Parameters:

Flux = 3594 lm Eff. : 117.93 lm/W Fe = 10.64 W

Electrical parameters:

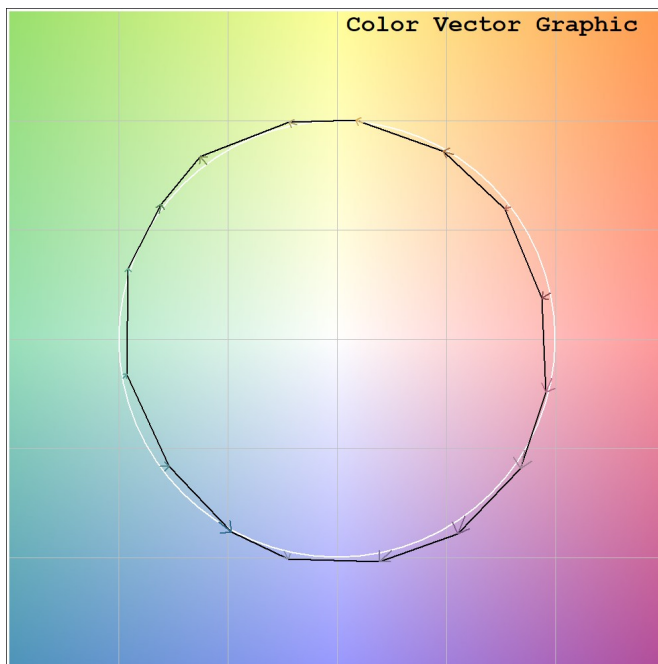
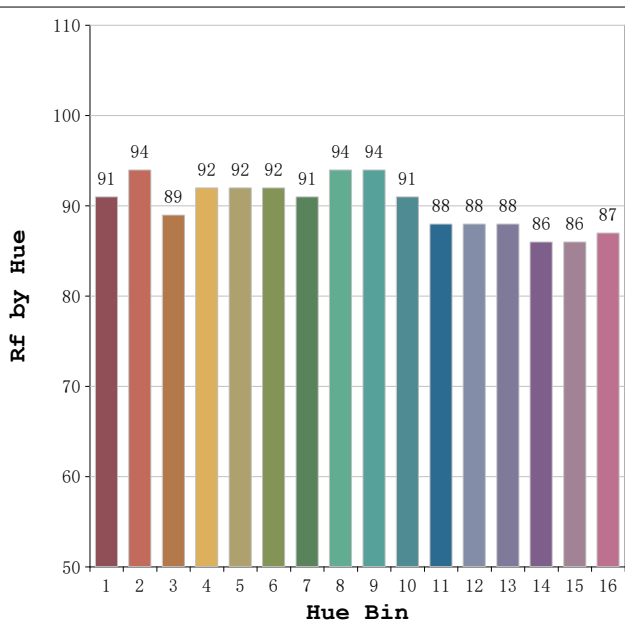
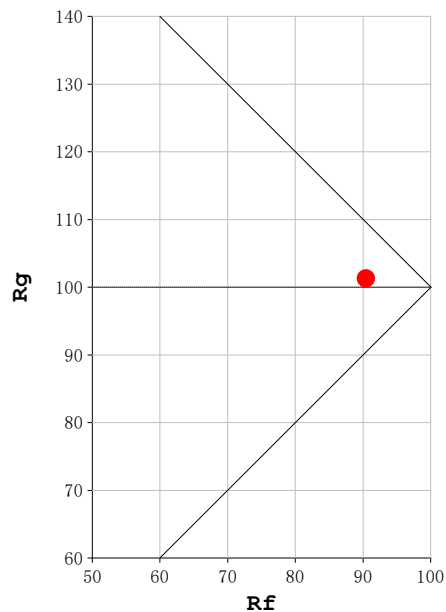
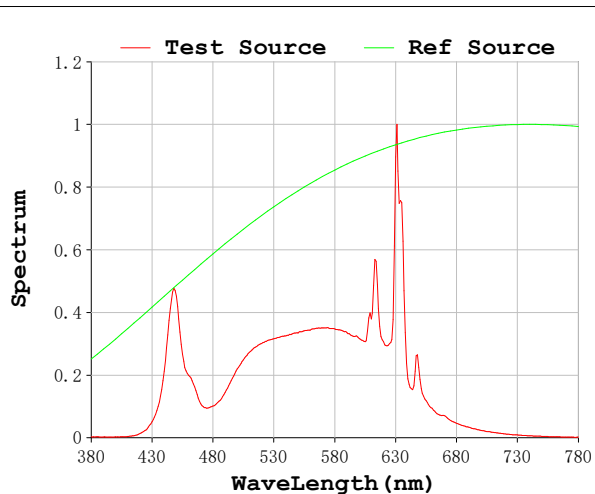
V = 230.05 V I = 0.1381 A P = 30.48 W PF = 0.9590

Status: Integral T = 195 ms Ip = 48703 (74%)

Model:Spotia 30w negro
 Tester:Sergio Carneros
 Temperature:20Deg
 Manufacturer:Luz Negra

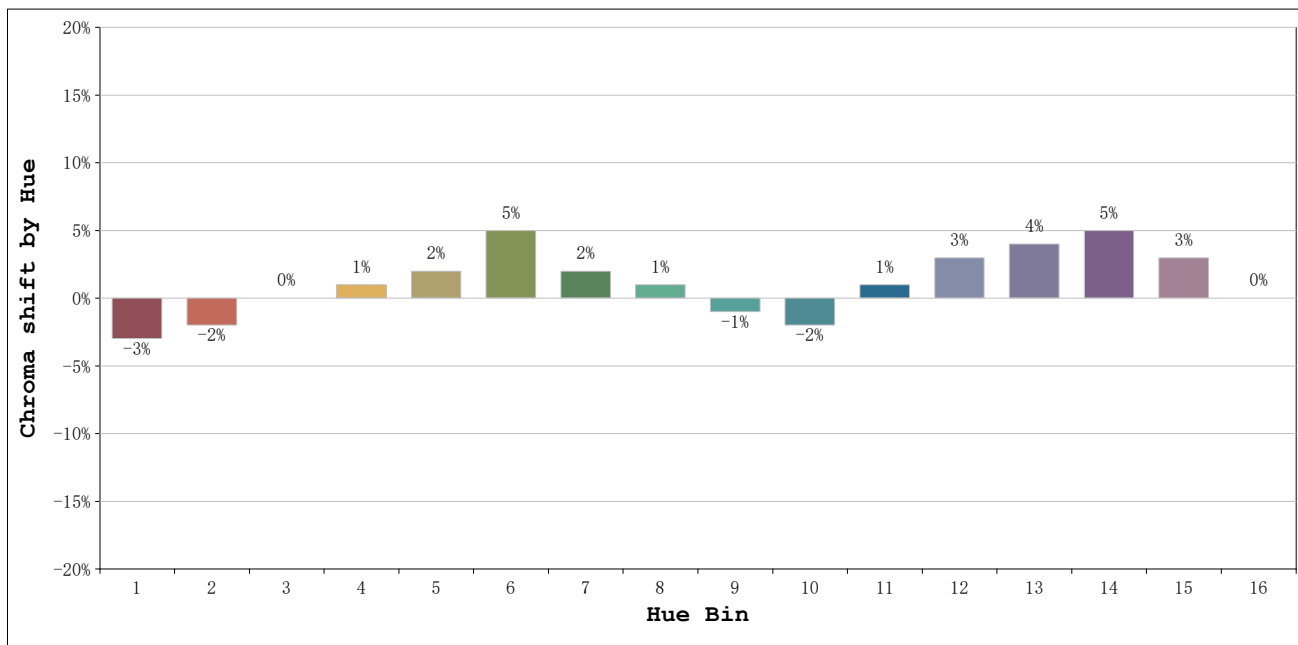
Number:4000k 20°
 Date:2026-03-23 09:56:46
 Humidity:50%
 Remarks:1 unidad

Rf: 90 **CCT: 3914 K** **u': 0.2250**
Rg: 101 **Duv: 0.0031** **v': 0.5071**



Model:Spotia 30w negro
 Tester:Sergio Carneros
 Temperature:20Deg
 Manufacturer:Luz Negra

Number:4000k 20°
 Date:2026-03-23 09:56:46
 Humidity:50%
 Remarks:1 unidad



| Hue Bin | Hue Angle | Rf | Graphic shift(%) | |
|---------|-----------------|----|------------------|-----|
| | | | Chroma | Hue |
| 1 | 0.0° - 22.5° | 91 | -3 | -1 |
| 2 | 22.5° - 45.0° | 94 | -2 | 1 |
| 3 | 45.0° - 67.5° | 89 | 0 | 5 |
| 4 | 67.5° - 90.0° | 92 | 1 | 4 |
| 5 | 90.0° - 112.5° | 92 | 2 | 3 |
| 6 | 112.5° - 135.0° | 92 | 5 | 1 |
| 7 | 135.0° - 157.5° | 91 | 2 | -3 |
| 8 | 157.5° - 180.0° | 94 | 1 | -2 |
| 9 | 180.0° - 202.5° | 94 | -1 | 0 |
| 10 | 202.5° - 225.0° | 91 | -2 | 2 |
| 11 | 225.0° - 247.5° | 88 | 1 | 8 |
| 12 | 247.5° - 270.0° | 88 | 3 | 3 |
| 13 | 270.0° - 292.5° | 88 | 4 | -5 |
| 14 | 292.5° - 315.0° | 86 | 5 | -6 |
| 15 | 315.0° - 337.5° | 86 | 3 | -7 |
| 16 | 337.5° - 360.0° | 87 | 0 | -6 |

Model:Spotia 30w negro
 Tester:Sergio Carneros
 Temperature:20Deg
 Manufacturer:Luz Negra

Number:4000k 20°
 Date:2026-03-23 09:56:46
 Humidity:50%
 Remarks:1 unidad